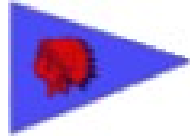


2010 SUMMER SERIES

April 4, 2010 - September 26, 2010

Fort Walton Yacht Club
Fort Walton Beach, Florida



SAILING INSTRUCTIONS

1. RULES

1.1 The regatta will be governed by the rules as defined in The Racing Rules of Sailing (RRS).

2. NOTICE TO COMPETITORS

2.1 Notices to competitors will be posted on the official notice board located on the back patio of the FWYC.

3. CHANGES TO SAILING INSTRUCTIONS

3.1 Any change in the sailing instructions will be posted before 11:30 AM on race day.

4. SIGNALS MADE ASHORE

4.1 Signals made ashore will be displayed from the flagstaff on the Western Lawn of FWYC.

4.2 When flag AP is displayed ashore, "1 minute" is replaced with "not less than 1 hour" in the *Race Signals* for AP.

5. SCHEDULE OF RACES

5.1 Ten (10) race days are scheduled to be held on the following dates:

April 4, 2010	April 25, 2010
May 9, 2010	May 23, 2010
June 6, 2010	July 18, 2010
August 1, 2010	August 22, 2010
September 12, 2010	September 26, 2010

5.2 Four (4) races will be attempted each race day.

5.3 Events for each race date:

Registration:	11:00 AM – 12:00 PM
Skippers Meeting:	12:00 PM (Optional)
First Warning:	12:55 PM

5.4 No race will be started after 4:00 PM.

6. CLASS FLAGS

<u>Fleet</u>	<u>Flag</u>
Laser	Pink
Open	Green
M (Multihull)	Light Blue

7. THE COURSES

7.1 The racing area will be the western end of Choctawhatchee Bay.

7.2 The courses are diagrammed in Attachment A.

7.3 The Race Committee will display the course to be sailed prior to the warning signal.

7.4 Course designations will be according to Attachment A.

8. MARKS

8.1 All marks will be orange balls or tetrahedrons.

9. THE START

9.1 The starting line will be between an orange flag on the race committee signal boat and a nearby mark.

9.2 Boats whose warning signal has not been made shall avoid the starting area during the starting sequence for other races.

9.3 In the event of individual recalls, the race committee will endeavor to hail offending boats. Failure to broadcast, broadcast in a timely manner, or be heard by the offending boats will not be grounds for a request for redress. This changes rule 62.1(a).

10. THE FINISH

- 10.1 The finishing line will be between an orange flag on the race committee signal boat and a nearby mark.
- 10.2 For the TO and WO courses, the starting/finishing line will be a *closed gate* except for starting or finishing.

11. PENALTY SYSTEM

- 11.1 For all classes, rule 44.1 is changed so that the Two-Turns Penalty is replaced by the One-Turn Penalty.

12. TIME LIMITS

- 12.1 A boat shall not start later than four (4) minutes after her starting signal.
- 12.2 The time limit for each race will be 1 ½ hours.
- 12.3 Boats failing to finish within thirty (30) minutes after the first boat finishes will be scored DNF.

13. PROTESTS AND REQUESTS FOR REDRESS

- 13.1 Rule 61.1(a) is changed by adding the following: "A boat intending to file a protest shall additionally inform the Race Committee finishing-line boat upon finishing or, if unable to finish, at the first reasonable opportunity, of the sail number(s) or otherwise identify the protested boat(s) and receive an acknowledgement form the Race Committee. Failure to do so will invalidate the protest.
- 13.2 Protests shall be written on forms available on the official notice board and filed with the Race Committee within 60 minutes after the race committee signal boat docks.
- 13.3 Protest hearing notices will be posted within 20 minutes after the protest time limit expires to inform competitors where and when there is a hearing in which they are parties to a protest or named as witnesses. Such postings constitute notification of the parties as required by RRS 63.2, and no signal will be made for this notice.
- 13.4 Protests will be heard in approximately the order of receipt.

14. SCORING

- 14.1 The High-Point Percentage Scoring System of Addendum 1 will apply. This changes rules A4.1, A4.2, and A9.
- 14.2 Ten (10) races are required to be completed to constitute a series.
- 14.3 A series score stays with each participant independent of the boats they sail.
- 14.4 Each participant must compete in at least 60% of all sailed races to qualify for overall series awards.
- 14.5 For a qualified participant, the worst scores beyond 60% will be excluded from the series score. This changes Rule A2.

15. SAFETY REGULATIONS

- 15.1 Prior to the warning signal of the first race of the day, each boat shall sail past the stern of the race committee signal boat on starboard tack and hail her sail number until acknowledged by the race committee. Failure to comply with this instruction may result in disqualification from the races sailed that day.
- 15.2 A boat that retires from a race or does not intend to start a race shall inform the nearest safety or race committee boat as soon as possible.

16. PRIZES

- 16.1 Prizes will be awarded for each class based on the number of entries.
- 16.2 The Awards Ceremony will take place as soon as possible after the last race of the series.

17. DISCLAIMER OF LIABILITY

- 17.1 Competitors participate in the regatta entirely at their own risk. See RRS Rule 4, Decision to Race. The Fort Walton Yacht Club will not accept any responsibility for material damage or personal injury or death sustained in conjunction with or prior to, during, or after the regatta.

ADDENDUM

HIGH POINT PERCENTAGE SCORING SYSTEM

1. RACE SCORES

- 1.1 Define 'N' to be the number of boats that come to the starting area in a particular race. Each boat starting and finishing and not thereafter retiring, being penalized or given redress will be scored as follows:

<u>Finishing Place</u>	<u>Score</u>
First	N
Second	N - 1
Third	N - 2
Fourth	N - 3
Each place thereafter	Subtract 1 additional point

- 1.2 Boats that do not compete (DNC) in a race will not be scored.
1.3 Boats that are disqualified (DSQ) will score zero (0) points.
1.4 All other boats that come into the starting area will score one (1) point.

2. SERIES SCORES

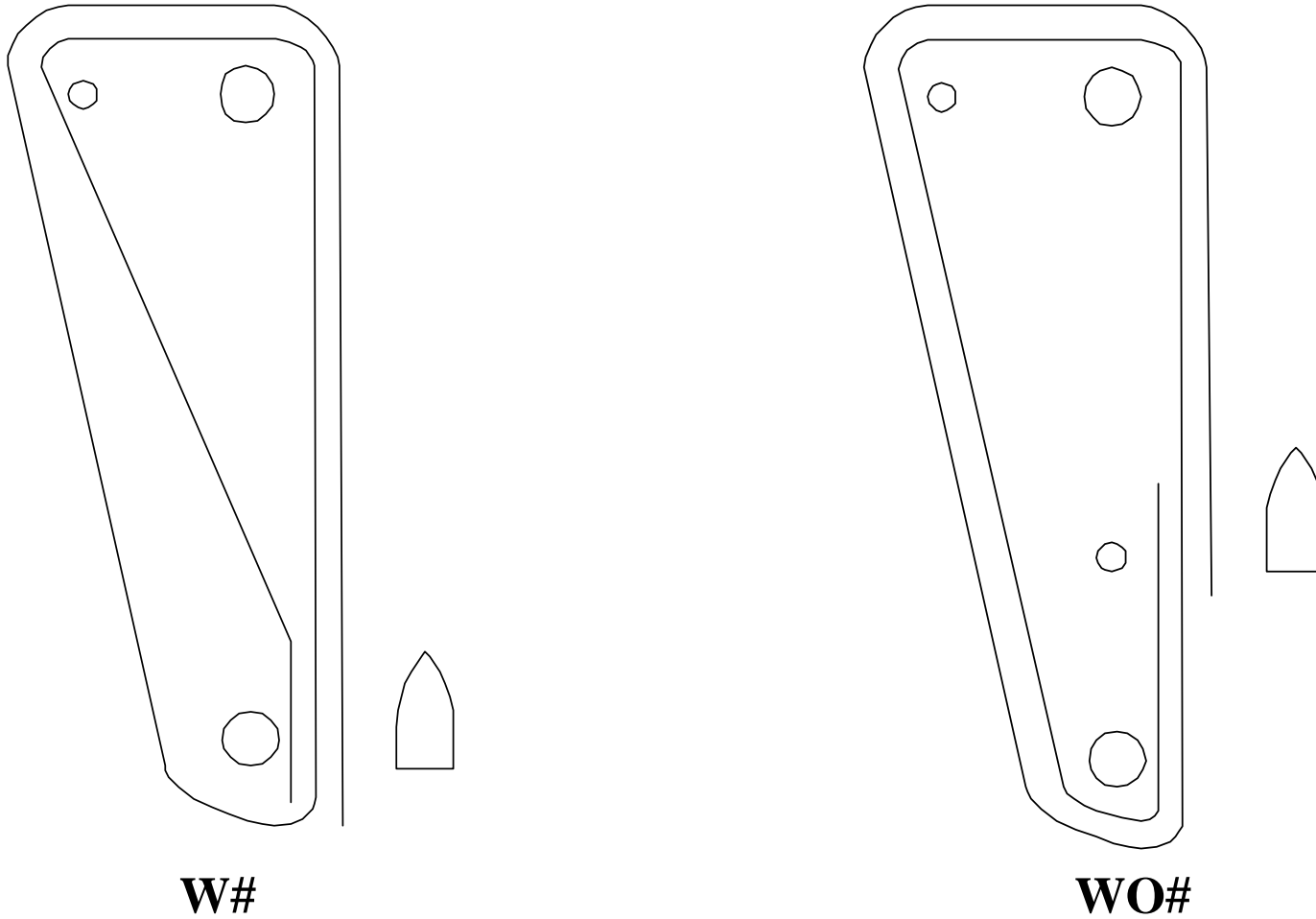
- 2.1 The series score for each boat will be a percentage calculated as follows: divide the sum of her race scores by the sum of the points she would have scored if she had placed first in every race in which she competed then multiply the result by 100.
2.2 The qualified boat with the highest series score is the winner, and others are ranked accordingly.
2.3 An excluded race counts as a race to qualify a boat for a series score, but not as one of her scored races.

3. TIES AND OTHER RULES

- 3.1 Race ties will be broken using The Racing Rules of Sailing (RRS) rule A7.
3.2 Series ties will be broken using RRS rule A8.

Attachment A - Course Diagrams

“W” Courses

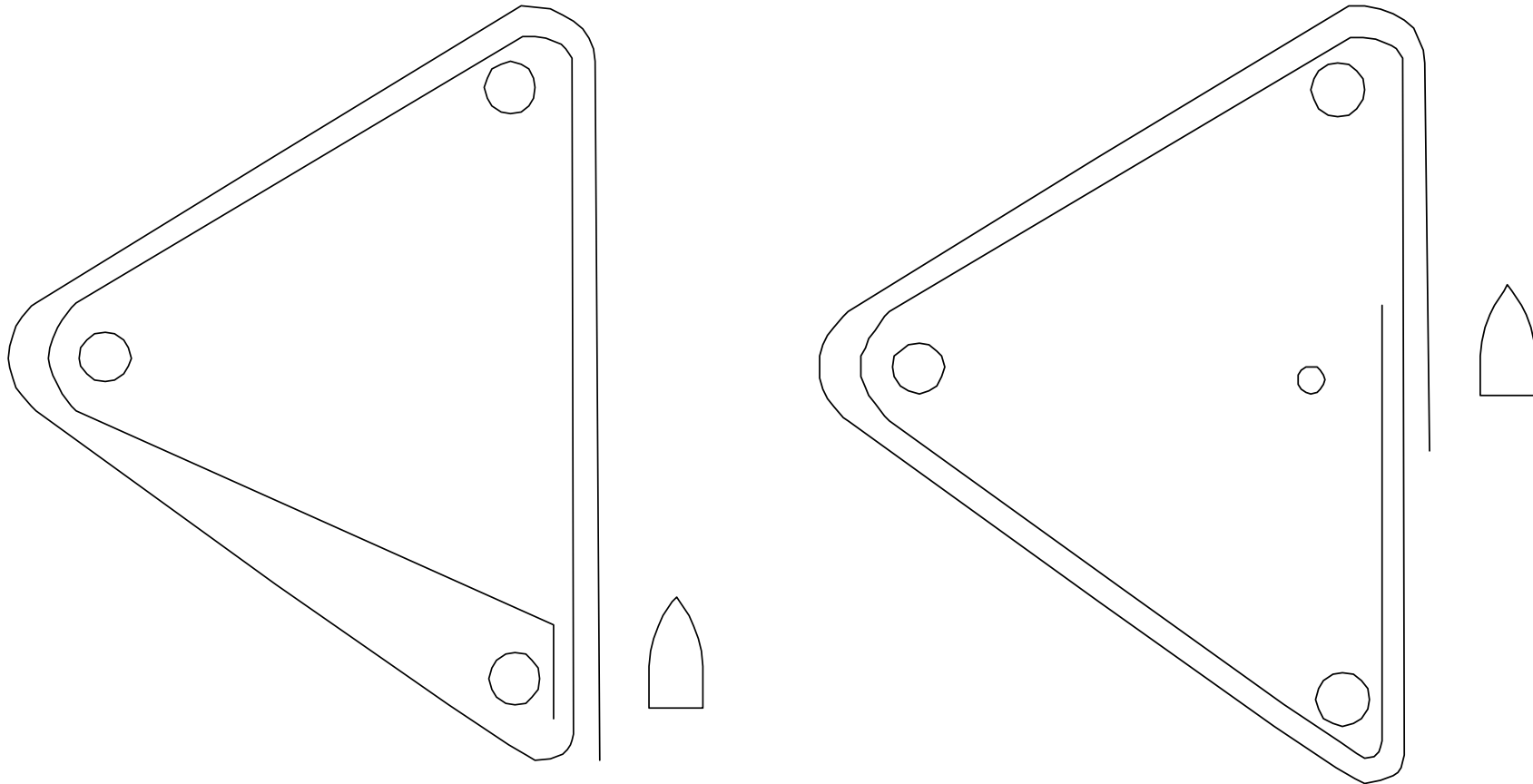


‘#’ indicates the number of laps
(W2 and WO2 are depicted)

*******NOTE: OFFSETS WILL BE USED AS INDICATED*******

Attachment A - Course Diagrams con't.

“T” Courses



T#

TO#

‘#’ indicates the number of laps
(T2 and TO2 are depicted)

*******NOTE: OFFSETS WILL BE USED AS INDICATED*******